

# RIP RAP

## PRODUCT DESCRIPTION

DryPak® Rip Rap is a blend of dry sands and cement in pre-filled, permeable, reinforced paper bags. The bag is designed, when wetted, to readily allow the passage of moisture through to the cement binder. Hydration of the cement then takes place leaving a solid, durable tiered barrier. Bags are consistent in colour and blend with surroundings. Over a period of time the paper bag degrades evenly.



## SUPPLY

DryPak® Rip Rap is available from the Customer Service Centre at the Birkenhead Works.

DryPak® Rip Rap is pre-packed into easy to handle 20 kg permeable reinforced paper bags.

The dimensions of the bag, when full, are approximately 500 mm x 290 mm x 80 mm.

## SPECIFICATION

All products are manufactured under a third party certified manufacturing and supply quality assurance system to AS/NZS ISO 9001 (NCS Certification No 6041).

## APPLICATIONS

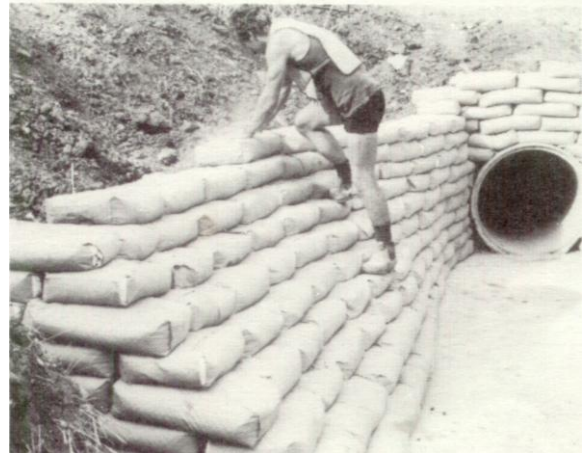
DryPak® Rip Rap is used to construct temporary and permanent retaining walls for:

- Highway and railway cuttings.
- Pipe and culvert headwalls and sidewalls
- Bridge revetments
- Earthfills
- Stabilisations of underwater cables and pipelines
- Retaining of park pathways
- Lake, canal and creek surrounds
- Landscaping
- Boat launching ramps
- Permanent trench walls

## LIMITATIONS

As the final use of DryPak® Rip Rap bags is beyond the control of Adelaide Brighton Cement, no responsibility can be accepted for the performance of the product.

It is strongly recommended a qualified civil engineer be consulted to advise on using the product as a means of retaining earth or backfill.



## ADVANTAGES

### Bag Material

- Special attention has been given to selecting a colour and texture for the bag to blend well with surroundings. Finished appearance is neat and regular.
- The bags are designed to degrade evenly leaving no sign of the package.
- Excellent industrial design has been applied to the bag. It is embossed to reduce any possible slippage.
- Dry sand and cement is not released through the fabric, but moisture can readily pass through the special paper membrane.

### Functionality

- Filled bags are easily transported, usually on pallets. When access is difficult, bags are conveyed easier than most other materials used for erosion control.
- Positioning of bags necessitates only the use of placement labour. No special equipment. Tools or fasteners are necessary.
- Obstructions on a slope can be readily surrounded with mouldable DryPak® Rip Rap bags.
- Extremely fast yet permanent corrections of soil erosion problems is obtained with DryPak® Rip Rap.

# RIP RAP

## DIRECTIONS FOR USE

- No special preparatory work is necessary.
- The base, for the bottom layer, should be solid and free from loose material.
- Bags should be placed closely together and tamped into final position with a heavy flat object.
- The completed barrier should be wetted.
- However, if a water supply is not readily available the bags will absorb moisture from the surrounding ground and air, or when it next rains.
- In construction of a tiered barrier wall, bags should be placed in a running bond pattern and should be stepped or inclined for added rigidity.
- A stronger wall is achieved by placing the longest bag dimension at right angles to the barrier's alignment.
- When additional barrier stability is required or when subjected to moving water, steel rods can be driven through the bags.

## HANDLING AND STORAGE

Manual handling of bag products without due care and attention may result in personal injury. Unless you have been trained in manual handling methods it is suggested that you share the load with another person.

DryPak® Rip Rap can be stored for up to six (6) months provided it is stored in a dry place and protected from ingress of moisture.

## SAFETY INFORMATION

For safety information refer to the Safety Data Sheet for DryPak® Rip Rap.

## COVERAGE

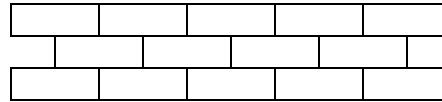


Figure 1

Stacked in wall lengthwise vertical view)  
Allow 22 bags/m<sup>2</sup>

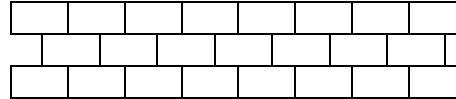
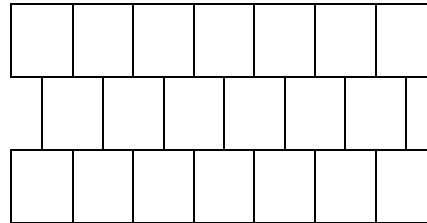


Figure 2

Stacked in wall widthwise vertical view)  
Allow 39 bags/m<sup>2</sup>



Laid flat (horizontal areas only – plan view)  
Allow 5 bags/m<sup>2</sup>

## CONTACT POINTS

**For further information contact the Sales and Marketing Department at:**

Adelaide Brighton Cement Ltd  
ABN 96 007 870 199  
62 Elder Road  
BIRKENHEAD SA 5015

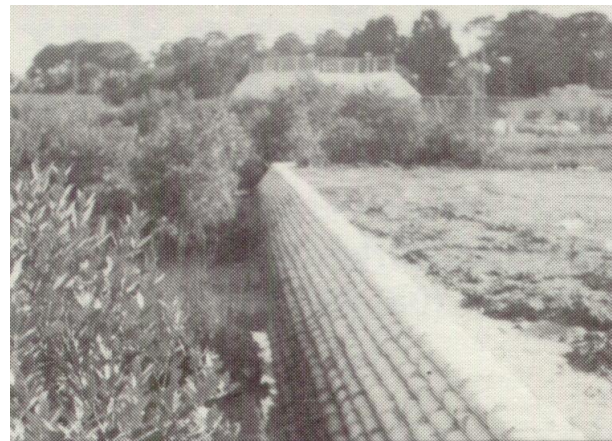
**Telephone: 08 8300 0440**

**Facsimile: 08 8341 1591**

**Web Site: [www.adelaidebrighton.com.au](http://www.adelaidebrighton.com.au)**



See Figure 1



See Figure 2

## DISCLAIMER

While the information in this Product Data Sheet has been prepared in good faith, Adelaide Brighton Cement Limited does not warrant that the information is accurate, complete or up to date. Each user of any information, or any product referred to, in this Product Data Sheet must:

- determine whether the information or product is suitable for their purpose;
- assess and control any risks associated with the information or product; and
- obtain professional advice in relation to the use of the information or product.

Failure to do so may result in serious damage or injury.

To the extent permitted by law, Adelaide Brighton Cement Limited:

- excludes all representations, warranties and guarantees in relation to any information in this Product Data Sheet; and
- will not be liable for any direct, indirect, consequential, incidental, special or economic loss (including but not limited to any loss of actual or anticipated profits, revenue, savings, production, business, opportunity, access to markets, goodwill, reputation, publicity, or use) arising from any use of or reliance on any information in this Product Data Sheet.

DryPak® and the DryPak® logo, the Adelaide Brighton logo and Adelaide Brighton Cement are registered trade marks of Adelaide Brighton Limited and its related entities.